

# ANNUAL REPORT

# 2017



## Dear Friends,

This Annual Report celebrates WPHP's 2017 accomplishments and honors our partners. While the work we do is complex, it is based on a simple and highly effective model deployed with accountability, consistency, and excellence. WPHP works - the doctors we support, as well as their families, patients and communities, all benefit from our efforts. None of this would be possible without the support of the licensees whose surcharges underwrite our work; the courageous compassion of those who reach out to us each year on behalf of themselves or a peer; the collaboration among the employers, organizations, professional associations, Boards and Commissions with whom we partner; and the dedication of our volunteer Board of Directors to guide our mission. Thank you!

Chris Bundy, MD, MPH  
Executive Medical Director

Sheldon Cooper  
Executive Director

Healthy  
Doctors =  
Better  
Care

- ▶ Decreased medical errors
- ▶ Increased patient satisfaction
- ▶ Better treatment recommendations and increased treatment adherence
- ▶ Lower malpractice risk
- ▶ Better treatment outcomes such as post-hospital discharge recovery times

## Testimonial:

"With the framework of WPHP and the program I learned acceptance. I learned that people make mistakes and that is okay. Today I have a great relationship with my co-workers/employees. I have compassion. I enjoy going to work. I enjoy life again."

## Our Mission:

To facilitate the rehabilitation of healthcare professionals who have physical or mental conditions that could compromise patient safety and to monitor their recovery.



# Help Not Discipline

WPHP is a confidential, therapeutic alternative to discipline

90%

of participants receive help without ever being known to their licensing board

## What is WPHP's purpose?

- ▶ Protect the patients of Washington
- ▶ Promote early detection of treatable diseases
- ▶ Rehabilitate healthcare providers
- ▶ Keep safe and healthy professionals in practice

## What does WPHP help with?

- ▶ Behavioral health:  
mood, anxiety disorders, etc
- ▶ Substance use problems
- ▶ Cognitive and neurological conditions
- ▶ Burnout
- ▶ ANY health condition

189

Individuals referred to WPHP in 2017

130

Met with WPHP.  
69% of those referred came in

80

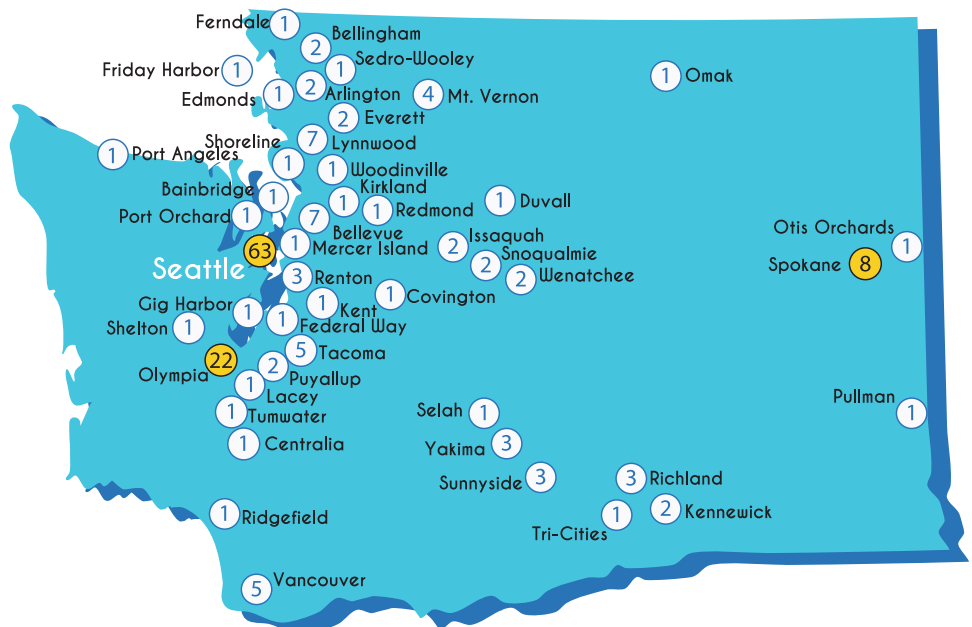
Joined WPHP.  
43% of those referred signed agreements

Over 1/2 of referrals are cleared, concerns are put to rest

## Referrals to WPHP by Location

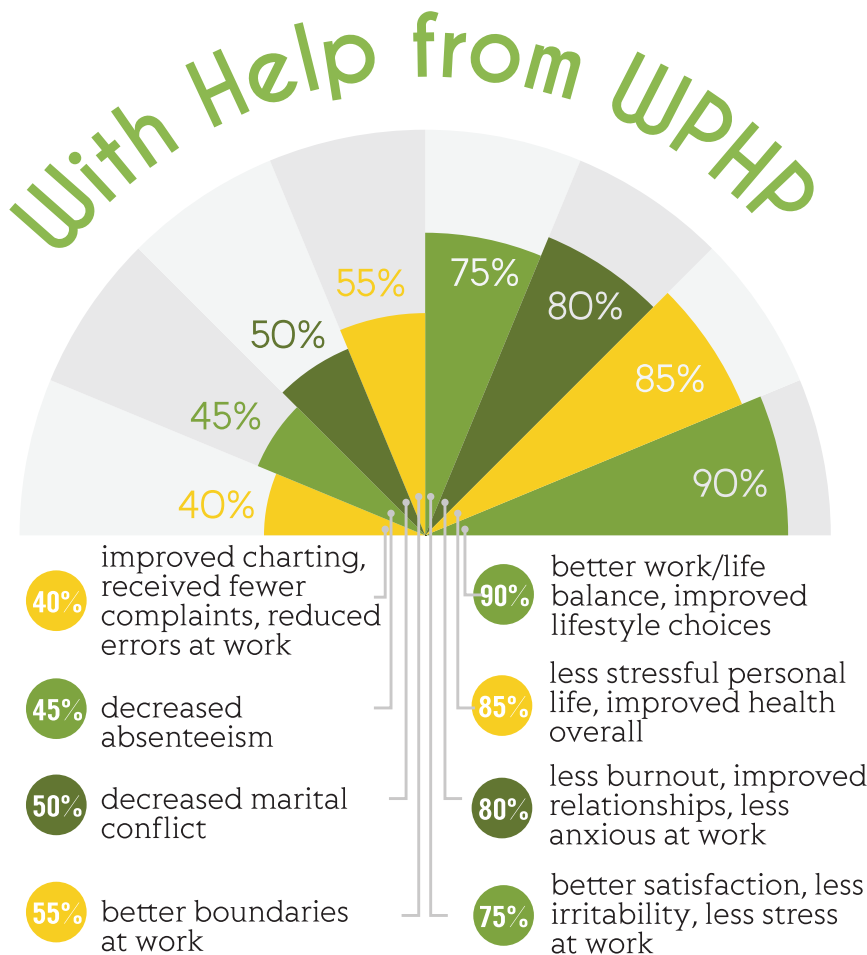
### Out of State

Alabama 1	New Mexico 3
California 2	New York 1
Canada 1	N. Carolina 1
Florida 1	Oregon 4
Georgia 1	Pennsylvania 1
Maryland 1	Texas 1
Michigan 2	Utah 1



# WPHP Works

Benefits extend beyond impairing illness



90%

Working in their field at program completion

80%

Substance Use Disorder participants relapse-free at 5 years

90%

Describe their WPHP experience as extremely useful or life-saving

50%

Decrease in malpractice risk

## Testimonial

"My life clearly changed with a call to WPHP...the symptoms of bipolar disorder are gone and I've not taken a psych med in 4 years; I'm a shareholder and a leader at my clinic. I'm a reliable father and a husband, and I'm asked to contribute inside and outside the recovery community. I've been sober 4 years and it isn't always easy or pretty - life still happens and not always according to the script I would have it follow. Recovery gave me a way to face the good and the bad with measure and dignity. I'm so grateful for that phone call."

## WPHP Reduces Burnout

Only 15% of WPHP participants experience burnout, while 54% of physicians in general do.

15%



WPHP Participants

54%



Physicians in General

# Partnership=Strength

## Who We Serve

Allopathic, Osteopathic, and Podiatric Physicians, Physician Assistants, Dentists, and Veterinarians, residents and the students and families of these disciplines.

## Education & Outreach

75

Hours of educational presentations in 2017

5,030

Professionals reached through presentations in 2017

27

Outreach contacts in 2017

Now scheduling events for 2019 - 2020!

- ▶ Continuing education presentations
- ▶ Newsletter and article contributions
- ▶ Professional student and trainee education
- ▶ Outreach and consultation for healthcare organizations
- ▶ Collaboration with professional organizations
- ▶ Local, regional, and national leadership, service, and expertise

## WPHP Board of Directors

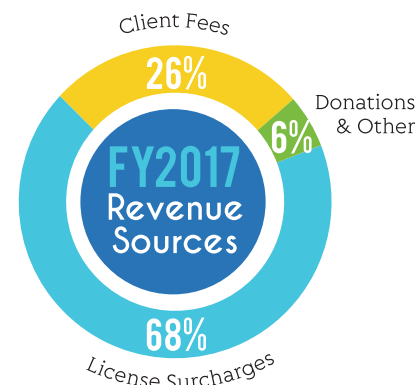
Edward Walker, MD, MHA, Chair  
Lon Hatfield, MD, PhD, Vice Chair  
Tom Miller, MD, Secretary  
Tom Curry, Treasurer

Rob Benedetti, MD  
Stew Cogan, JD  
Lyle Larson, PA-C, PhD  
Brad McPhee, DDS

Mary-Lou Misrahy, ARM  
Mary Collins Murphy  
Tad Patterson, MD

Antonio Pedroza, MD  
Brenda Suiter, MHA  
John Wynn, MD, DFAPA

## Financial Snapshot



## Donations Support Financial Assistance

On the strength of philanthropic contributions from many individuals and organizations, WPHP provided \$32,214 in grants to clients in need during 2017. These contributions supported 53 clients to access evaluations and treatment, as well as our Annual Reunion and ongoing WPHP services. We are deeply grateful to our donors for this support.